**Material:**

▶ Copper(EN 13600)

**Surface:**

▶ Tin-plated to protect against corrosion (min. 5 micron)

**Characteristics:**

- ▶ Annealed material optimises material and crimping properties
- ▶ Simple and safe connection due to flat contact surfaces and internal chamfer
- ▶ Item identification on cable lug

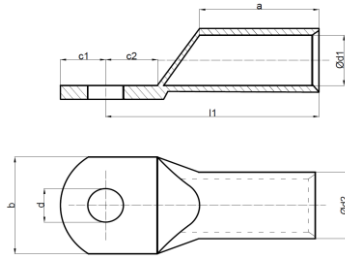
Nominal cross section mm <sup>2</sup>	Size of bolt dia.	Part No.	Dimension mm								Packing unit/pcs
			d	d1	d2	l1	a	c1	c2	b	
10 mm <sup>2</sup>	M5	SKP-S-01005	5,5	4,5	6,5	22,0	11,5	7,0	7,0	10,0	800
	M6	SKP-S-01006	6,5	4,5	6,5	22,0	11,5	7,0	7,0	11,0	800
	M8	SKP-S-01008	8,5	4,5	6,5	23,0	11,5	8,0	8,0	13,5	800
16 mm <sup>2</sup>	M5	SKP-S-01605	5,5	5,5	7,5	24,0	12,5	7,5	7,5	12,0	500
	M6	SKP-S-01606	6,5	5,5	7,5	24,0	12,5	7,5	7,5	12,0	500
	M8	SKP-S-01608	8,5	5,5	7,5	25,5	13,0	8,0	8,0	13,5	500
	M10	SKP-S-01610	10,5	5,5	7,5	25,5	13,0	9,0	9,0	16,0	500
25 mm <sup>2</sup>	M6	SKP-S-02506	6,5	7,0	9,5	30,5	17,0	8,5	8,5	14,0	300
	M8	SKP-S-02508	8,5	7,0	9,5	30,5	17,0	8,5	8,5	14,0	300
	M10	SKP-S-02510	10,5	7,0	9,5	31,5	17,0	10,0	10,0	16,0	300
	M12	SKP-S-02512	13,0	7,0	9,5	34,0	17,0	11,0	11,0	18,0	300
35 mm <sup>2</sup>	M6	SKP-S-03506	6,5	8,5	11,0	34,5	19,0	9,5	9,5	16,0	200
	M8	SKP-S-03508	8,5	8,5	11,0	34,5	19,0	9,5	9,5	16,0	200
	M10	SKP-S-03510	10,5	8,5	11,0	35,0	19,0	10,0	10,0	16,5	200
	M12	SKP-S-03512	13,0	8,5	11,0	37,0	19,0	11,0	11,0	18,0	200
50 mm <sup>2</sup>	M6	SKP-S-05006	6,5	10,0	13,0	40,0	21,0	11,0	11,0	19,0	150
	M8	SKP-S-05008	8,5	10,0	13,0	40,0	21,0	11,0	11,0	19,0	150
	M10	SKP-S-05010	10,5	10,0	13,0	40,0	21,0	11,0	11,0	19,0	150
	M12	SKP-S-05012	13,0	10,0	13,0	40,0	21,0	11,0	11,0	19,0	150
	M14	SKP-S-05014	15,0	10,0	13,0	43,0	21,0	13,0	13,0	22,0	150
70 mm <sup>2</sup>	M8	SKP-S-07008	8,5	11,5	14,5	41,5	23,0	11,0	11,0	21,5	100
	M10	SKP-S-07010	10,5	11,5	14,5	41,5	23,0	11,0	11,0	21,5	100
	M12	SKP-S-07012	13,0	11,5	14,5	41,5	23,0	11,0	11,0	21,5	100
	M14	SKP-S-07014	15,0	11,5	14,5	43,5	23,0	13,0	13,0	23,0	100
	M16	SKP-S-07016	17,0	11,5	14,5	46,5	23,0	16,0	16,0	23,0	100
95 mm <sup>2</sup>	M8	SKP-S-09508	8,5	13,5	16,5	48,0	26,0	12,0	12,5	24,0	80
	M10	SKP-S-09510	10,5	13,5	16,5	48,0	26,0	12,0	12,5	24,0	80
	M12	SKP-S-09512	13,0	13,5	16,5	48,0	26,0	12,0	12,5	24,0	80
	M14	SKP-S-09514	15,0	13,5	16,5	50,0	26,0	14,0	14,0	26,0	80
	M16	SKP-S-09516	17,0	13,5	16,5	52,0	26,0	16,0	16,0	26,0	80

\*CABLE LUGS WHICH ARE INDICATED WITH BOLD TEXT IN THIS TABLE ARE OUR STANDARD PRODUCTION.

STANDARD TYPE TUBULAR CABLE LUGS

Electrical connection systems

Copper tubular cable lugs and connectors



**Material:**

► Copper(EN 13600)

**Surface:**

► Tin-plated to protect against corrosion (min. 5 micron)

**Characteristics:**

- Annealed material optimises material and crimping properties
- Simple and safe connection due to flat contact surfaces and internal chamfer
- Item identification on cable lug

Nominal cross section mm <sup>2</sup>	Size of bolt dia.	Part No.	Dimension mm								Paking unit/pcs
			d	d1	d2	l1	a	c1	c2	b	
120 mm <sup>2</sup>	M10	SKP-S-12010	10,5	14,5	18,0	52,0	27,0	14,0	14,0	26,0	50
	M12	SKP-S-12012	13,0	14,5	18,0	52,0	27,0	14,0	14,0	26,0	50
	M14	SKP-S-12014	15,0	14,5	18,0	52,0	27,0	14,0	14,0	26,0	50
	M16	SKP-S-12016	17,0	14,5	18,0	52,0	27,0	14,0	14,0	26,0	50
	M20	SKP-S-12020	21,0	14,5	18,0	54,0	27,0	16,0	16,0	29,0	50
150 mm <sup>2</sup>	M10	SKP-S-15010	10,5	16,5	21,0	57,0	30,0	15,0	15,0	30,5	30
	M12	SKP-S-15012	13,0	16,5	21,0	57,0	30,0	15,0	15,0	30,5	30
	M14	SKP-S-15014	15,0	16,5	21,0	57,0	30,0	15,0	15,0	30,5	30
	M16	SKP-S-15016	17,0	16,5	21,0	57,0	30,0	15,0	15,0	30,5	30
185 mm <sup>2</sup>	M10	SKP-S-18510	10,5	18,5	23,0	65,5	33,5	17,0	18,0	34,0	30
	M12	SKP-S-18512	13,0	18,5	23,0	65,5	33,5	17,0	18,0	34,0	30
	M14	SKP-S-18514	15,0	18,5	23,0	65,5	33,5	17,0	18,0	34,0	30
	M16	SKP-S-18516	17,0	18,5	23,0	65,5	33,5	17,0	18,0	34,0	30
240 mm <sup>2</sup>	M10	SKP-S-24010	10,5	21,0	26,0	72,0	39,0	17,0	18,0	38,0	25
	M12	SKP-S-24012	13,0	21,0	26,0	72,0	39,0	17,0	18,0	38,0	25
	M14	SKP-S-24014	15,0	21,0	26,0	72,0	39,0	17,0	18,0	38,0	25
	M16	SKP-S-24016	17,0	21,0	26,0	72,0	39,0	17,0	18,0	38,0	25
300 mm <sup>2</sup>	M12	SKP-S-30012	13,0	23,5	28,5	77,0	41,0	19,0	19,0	42,0	20
	M14	SKP-S-30014	15,0	23,5	28,5	77,0	41,0	19,0	19,0	42,0	20
	M16	SKP-S-30016	17,0	23,5	28,5	77,0	41,0	19,0	19,0	42,0	20
400 mm <sup>2</sup>	M14	SKP-S-40012	15,0	27,0	33,0	88,0	49,0	20,0	20,0	48,0	12
	M16	SKP-S-40016	17,0	27,0	33,0	88,0	49,0	20,0	20,0	48,0	12
	M20	SKP-S-40020	21,0	27,0	33,0	88,0	49,0	20,0	20,0	48,0	12
500 mm <sup>2</sup>	M16	SKP-S-50016	17,0	30,0	38,0	96,0	52,0	22,0	22,0	55,0	8
	M20	SKP-S-50020	21,0	30,0	38,0	96,0	52,0	22,0	22,0	55,0	8
600 mm <sup>2</sup>	M20	SKP-S-60020	21,0	34,0	42,0	113,0	60,0	23,0	23,0	61,0	6

\*CABLE LUGS WHICH ARE INDICATED WITH BOLD TEXT IN THIS TABLE ARE OUR STANDARD PRODUCTION.