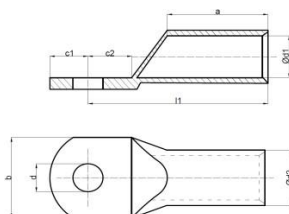


STANDARD TYPE TUBULAR CABLE LUGS

Electrical connection systems

Copper tubular cable lugs and connectors



Material:

► Copper(EN 13600)

Surface:

► Tin-plated to protect against corrosion (min. 5 micron)

Characteristics:

- Annealed material optimises material and crimping properties
- Simple and safe connection due to flat contact surfaces and internal chamfer
- Item identification on cable lug

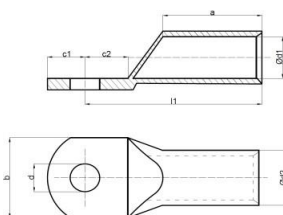
Nominal cross section mm ²	Size of bolt dia.	Part No.	Dimension mm								Paking unit/pcs
			d	d1	d2	l1	a	c1	c2	b	
6 mm ²	M5	SKP-S-00605	5.3	3.5	6.5	21.0	9.0	6.5	7.5	10.0	800
	M6	SKP-S-00606	6.4	3.5	6.5	21.0	9.0	6.5	7.5	12.0	800
	M8	SKP-S-00608	8.4	3.5	6.5	23.0	9.0	10.0	10.0	15.0	800
10 mm ²	M5	SKP-S-01005	5.5	4.5	6.5	22.0	11.5	7.0	7.0	10.0	800
	M6	SKP-S-01006	6.5	4.5	6.5	22.0	11.5	7.0	7.0	11.0	800
	M8	SKP-S-01008	8.5	4.5	6.5	23.0	11.5	8.0	8.0	13.5	800
16 mm ²	M5	SKP-S-01605	5.5	5.5	7.5	24.0	12.5	7.5	7.5	12.0	500
	M6	SKP-S-01606	6.5	5.5	7.5	24.0	12.5	7.5	7.5	12.0	500
	M8	SKP-S-01608	8.5	5.5	7.5	25.5	13.0	8.0	8.0	13.5	500
	M10	SKP-S-01610	10.5	5.5	7.5	25.5	13.0	9.0	9.0	16.0	500
25 mm ²	M6	SKP-S-02506	6.5	7.0	9.5	30.5	17.0	8.5	8.5	14.0	300
	M8	SKP-S-02508	8.5	7.0	9.5	30.5	17.0	8.5	8.5	14.0	300
	M10	SKP-S-02510	10.5	7.0	9.5	31.5	17.0	10.0	10.0	16.0	300
	M12	SKP-S-02512	13.0	7.0	9.5	34.0	17.0	11.0	11.0	18.0	300
35 mm ²	M6	SKP-S-03506	6.5	8.5	11.0	34.5	19.0	9.5	9.5	16.0	200
	M8	SKP-S-03508	8.5	8.5	11.0	34.5	19.0	9.5	9.5	16.0	200
	M10	SKP-S-03510	10.5	8.5	11.0	35.0	19.0	10.0	10.0	16.5	200
	M12	SKP-S-03512	13.0	8.5	11.0	37.0	19.0	11.0	11.0	18.0	200
50 mm ²	M6	SKP-S-05006	6.5	10.0	13.0	40.0	21.0	11.0	11.0	19.0	150
	M8	SKP-S-05008	8.5	10.0	13.0	40.0	21.0	11.0	11.0	19.0	150
	M10	SKP-S-05010	10.5	10.0	13.0	40.0	21.0	11.0	11.0	19.0	150
	M12	SKP-S-05012	13.0	10.0	13.0	40.0	21.0	11.0	11.0	19.0	150
	M14	SKP-S-05014	15.0	10.0	13.0	43.0	21.0	13.0	13.0	22.0	150
70 mm ²	M8	SKP-S-07008	8.5	11.5	14.5	41.5	23.0	11.0	11.0	21.5	100
	M10	SKP-S-07010	10.5	11.5	14.5	41.5	23.0	11.0	11.0	21.5	100
	M12	SKP-S-07012	13.0	11.5	14.5	41.5	23.0	11.0	11.0	21.5	100
	M14	SKP-S-07014	15.0	11.5	14.5	43.5	23.0	13.0	13.0	23.0	100
	M16	SKP-S-07016	17.0	11.5	14.5	46.5	23.0	16.0	16.0	23.0	100
95 mm ²	M8	SKP-S-09508	8.5	13.5	16.5	48.0	26.0	12.0	12.5	24.0	80
	M10	SKP-S-09510	10.5	13.5	16.5	48.0	26.0	12.0	12.5	24.0	80
	M12	SKP-S-09512	13.0	13.5	16.5	48.0	26.0	12.0	12.5	24.0	80
	M14	SKP-S-09514	15.0	13.5	16.5	50.0	26.0	14.0	14.0	26.0	80
	M16	SKP-S-09516	17.0	13.5	16.5	52.0	26.0	16.0	16.0	26.0	80

*CABLE LUGS WHICH ARE INDICATED WITH BOLD TEXT IN THIS TABLE ARE OUR STANDARD PRODUCTION

STANDARD TYPE TUBULAR CABLE LUGS

Electrical connection systems

Copper tubular cable lugs and connectors



Material:

► Copper(EN 13600)

Surface:

► Tin-plated to protect against corrosion (min. 5 micron)

Characteristics:

- Annealed material optimises material and crimping properties
- Simple and safe connection due to flat contact surfaces and internal chamfer
- Item identification on cable lug

Nominal cross section mm ²	Size of bolt dia.	Part No.	Dimension mm								Paking unit/pcs
			d	d1	d2	l1	a	c1	c2	b	
120 mm ²	M10	SKP-S-12010	10,5	14,5	18,0	52,0	27,0	14,0	14,0	26,0	50
	M12	SKP-S-12012	13,0	14,5	18,0	52,0	27,0	14,0	14,0	26,0	50
	M14	SKP-S-12014	15,0	14,5	18,0	52,0	27,0	14,0	14,0	26,0	50
	M16	SKP-S-12016	17,0	14,5	18,0	52,0	27,0	14,0	14,0	29,0	50
	M20	SKP-S-12020	21,0	14,5	18,0	54,0	27,0	16,0	16,0	29,0	50
150 mm ²	M10	SKP-S-15010	10,5	16,5	21,0	57,0	30,0	15,0	15,0	30,5	30
	M12	SKP-S-15012	13,0	16,5	21,0	57,0	30,0	15,0	15,0	30,5	30
	M14	SKP-S-15014	15,0	16,5	21,0	57,0	30,0	15,0	15,0	30,5	30
	M16	SKP-S-15016	17,0	16,5	21,0	57,0	30,0	15,0	15,0	30,5	30
185 mm ²	M10	SKP-S-18510	10,5	18,5	23,0	65,5	33,5	17,0	18,0	34,0	30
	M12	SKP-S-18512	13,0	18,5	23,0	65,5	33,5	17,0	18,0	34,0	30
	M14	SKP-S-18514	15,0	18,5	23,0	65,5	33,5	17,0	18,0	34,0	30
	M16	SKP-S-18516	17,0	18,5	23,0	65,5	33,5	17,0	18,0	34,0	30
240 mm ²	M10	SKP-S-24010	10,5	21,0	26,0	72,0	39,0	17,0	18,0	38,0	25
	M12	SKP-S-24012	13,0	21,0	26,0	72,0	39,0	17,0	18,0	38,0	25
	M14	SKP-S-24014	15,0	21,0	26,0	72,0	39,0	17,0	18,0	38,0	25
	M16	SKP-S-24016	17,0	21,0	26,0	72,0	39,0	17,0	18,0	38,0	25
300 mm ²	M12	SKP-S-30012	13,0	23,5	28,5	77,0	41,0	19,0	19,0	42,0	20
	M14	SKP-S-30014	15,0	23,5	28,5	77,0	41,0	19,0	19,0	42,0	20
	M16	SKP-S-30016	17,0	23,5	28,5	77,0	41,0	19,0	19,0	42,0	20
400 mm ²	M14	SKP-S-40012	15,0	27,0	33,0	88,0	49,0	20,0	20,0	48,0	12
	M16	SKP-S-40016	17,0	27,0	33,0	88,0	49,0	20,0	20,0	48,0	12
	M20	SKP-S-40020	21,0	27,0	33,0	88,0	49,0	20,0	20,0	48,0	12
500 mm ²	M16	SKP-S-50016	17,0	30,0	38,0	96,0	52,0	22,0	20,0	55,0	8
600 mm ²	M20	SKP-S-50020	21,0	30,0	38,0	96,0	52,0	22,0	22,0	55,0	8
	M20	SKP-S-60020	21,0	34,0	42,0	113,0	60,0	23,0	23,0	61,0	6

*CABLE LUGS WHICH ARE INDICATED WITH BOLD TEXT IN THIS TABLE ARE OUR STANDARD PRODUCTION