

**Material:**

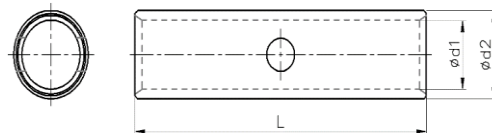
► Copper(EN 13600)

**Surface:**

► Tin-plated to protect against corrosion (min. 5 micron)

**Characteristics:**

- Annealed material optimises material and crimping properties
- Simple and safe connection due to flat contact surfaces and internal chamfer



Nominal cross section mm <sup>2</sup>	Part No.	Dimension mm			Paking unit/pcs
		d1	d2	L	
<b>10 mm<sup>2</sup></b>	EM-E-010	4,5	6,0	29,0	400
<b>16 mm<sup>2</sup></b>	EM-E-016	5,5	7,0	32,0	400
<b>25 mm<sup>2</sup></b>	EM-E-025	7,0	9,0	40,0	250
<b>35 mm<sup>2</sup></b>	EM-E-035	8,5	10,5	45,0	150
<b>50 mm<sup>2</sup></b>	EM-E-050	10,0	12,0	50,0	90
<b>70 mm<sup>2</sup></b>	EM-E-070	11,5	14,0	55,0	65
<b>95 mm<sup>2</sup></b>	EM-E-095	13,5	16,0	60,0	50
<b>120 mm<sup>2</sup></b>	EM-E-120	15,5	18,0	65,0	40
<b>150 mm<sup>2</sup></b>	EM-E-150	16,5	20,0	70,0	25
<b>185 mm<sup>2</sup></b>	EM-E-185	18,5	22,0	75,0	22
<b>240 mm<sup>2</sup></b>	EM-E-240	21,5	25,5	85,0	18

\*CABLE LUGS WHICH ARE INDICATED WITH BOLD TEXT IN THIS TABLE ARE OUR STANDARD PRODUCTION.