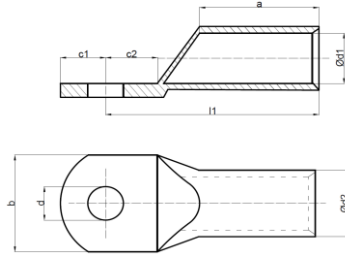


STANDARD TYPE TUBULAR CABLE LUGS

Electrical connection systems

Copper tubular cable lugs and connectors



Material:

► Copper(EN 13600)

Surface:

► Tin-plated to protect against corrosion (min. 5 micron)

Characteristics:

- Annealed material optimises material and crimping properties
- Simple and safe connection due to flat contact surfaces and internal chamfer
- Item identification on cable lug

Nominal cross section mm ²	Size of bolt dia.	Part No.	Dimension mm								Paking unit/pcs
			d	d1	d2	l1	a	c1	c2	b	
120 mm ²	M10	SKP-S-12010	10,5	14,5	18,0	52,0	27,0	14,0	14,0	26,0	50
	M12	SKP-S-12012	13,0	14,5	18,0	52,0	27,0	14,0	14,0	26,0	50
	M14	SKP-S-12014	15,0	14,5	18,0	52,0	27,0	14,0	14,0	26,0	50
	M16	SKP-S-12016	17,0	14,5	18,0	52,0	27,0	14,0	14,0	26,0	50
	M20	SKP-S-12020	21,0	14,5	18,0	54,0	27,0	16,0	16,0	29,0	50
150 mm ²	M10	SKP-S-15010	10,5	16,5	21,0	57,0	30,0	15,0	15,0	30,5	30
	M12	SKP-S-15012	13,0	16,5	21,0	57,0	30,0	15,0	15,0	30,5	30
	M14	SKP-S-15014	15,0	16,5	21,0	57,0	30,0	15,0	15,0	30,5	30
	M16	SKP-S-15016	17,0	16,5	21,0	57,0	30,0	15,0	15,0	30,5	30
185 mm ²	M10	SKP-S-18510	10,5	18,5	23,0	65,5	33,5	17,0	18,0	34,0	30
	M12	SKP-S-18512	13,0	18,5	23,0	65,5	33,5	17,0	18,0	34,0	30
	M14	SKP-S-18514	15,0	18,5	23,0	65,5	33,5	17,0	18,0	34,0	30
	M16	SKP-S-18516	17,0	18,5	23,0	65,5	33,5	17,0	18,0	34,0	30
240 mm ²	M10	SKP-S-24010	10,5	21,0	26,0	72,0	39,0	17,0	18,0	38,0	25
	M12	SKP-S-24012	13,0	21,0	26,0	72,0	39,0	17,0	18,0	38,0	25
	M14	SKP-S-24014	15,0	21,0	26,0	72,0	39,0	17,0	18,0	38,0	25
	M16	SKP-S-24016	17,0	21,0	26,0	72,0	39,0	17,0	18,0	38,0	25
300 mm ²	M12	SKP-S-30012	13,0	23,5	28,5	77,0	41,0	19,0	19,0	42,0	20
	M14	SKP-S-30014	15,0	23,5	28,5	77,0	41,0	19,0	19,0	42,0	20
	M16	SKP-S-30016	17,0	23,5	28,5	77,0	41,0	19,0	19,0	42,0	20
400 mm ²	M14	SKP-S-40012	15,0	27,0	33,0	88,0	49,0	20,0	20,0	48,0	12
	M16	SKP-S-40016	17,0	27,0	33,0	88,0	49,0	20,0	20,0	48,0	12
	M20	SKP-S-40020	21,0	27,0	33,0	88,0	49,0	20,0	20,0	48,0	12
500 mm ²	M16	SKP-S-50016	17,0	30,0	38,0	96,0	52,0	22,0	22,0	55,0	8
	M20	SKP-S-50020	21,0	30,0	38,0	96,0	52,0	22,0	22,0	55,0	8
600 mm ²	M20	SKP-S-60020	21,0	34,0	42,0	113,0	60,0	23,0	23,0	61,0	6

*CABLE LUGS WHICH ARE INDICATED WITH BOLD TEXT IN THIS TABLE ARE OUR STANDARD PRODUCTION.