

STANDARD TYPE BUTT CONNECTORS

Electrical connection systems

Copper tubular cable lugs and connectors



Material:

► Copper(EN 13600)

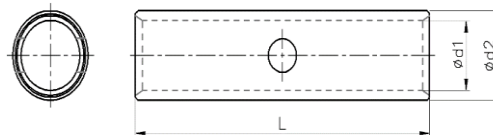
Surface:

► Tin-plated to protect against corrosion (min. 5 micron)

Characteristics:

► Annealed material optimises material and crimping properties

► Simple and safe connection due to flat contact surfaces and internal chamfer



Nominal cross section mm ²	Part No.	Dimension mm			Paking unit/pcs
		d1	d2	L	
6 mm ²	EM-S-006	4,0	5,5	25,0	800
10 mm ²	EM-S-010	5,0	7,0	29,0	600
16 mm ²	EM-S-016	6,0	8,0	32,0	400
25 mm ²	EM-S-025	7,0	10,0	40,0	250
35 mm ²	EM-S-035	9,0	11,0	45,0	150
50 mm ²	EM-S-050	10,0	13,0	50,0	90
70 mm ²	EM-S-070	12,0	15,0	55,0	65
95 mm ²	EM-S-095	14,0	17,0	60,0	50
120 mm ²	EM-S-120	15,0	18,0	65,0	40
150 mm ²	EM-S-150	17,0	21,0	70,0	25
185 mm ²	EM-S-185	19,0	23,0	75,0	22
240 mm ²	EM-S-240	21,0	26,0	85,0	18
300 mm ²	EM-S-300	24,0	29,0	100,0	10
400 mm ²	EM-S-400	27,0	33,0	110,0	10
500 mm ²	EM-S-500	30,0	38,0	120,0	10
600 mm ²	EM-S-600	34,0	42,0	130,0	10

*CABLE LUGS WHICH ARE INDICATED WITH BOLD TEXT IN THIS TABLE ARE OUR STANDARD PRODUCTION.